

# FINAL PLAT

## of

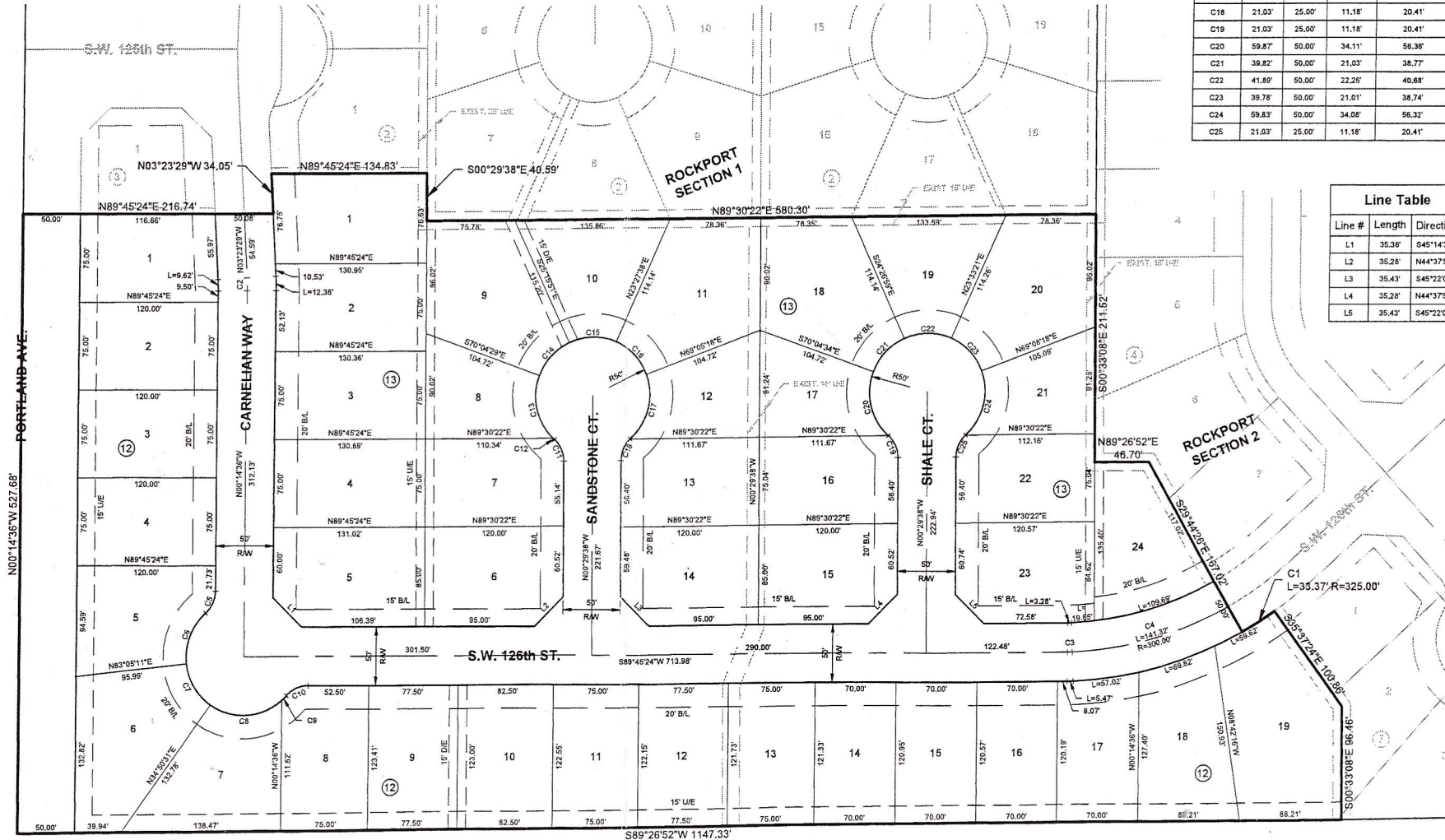
# ROCKPORT

### SECTION 4

BEING A PART OF THE NW/4, SEC. 13, T10N, R4W, I.M.  
AN ADDITION TO THE CITY OF OKLAHOMA CITY, CLEVELAND COUNTY, OKLAHOMA

Curve Table					
Curve #	Length	Radius	Tangent	Chord Length	Chord Direction
C1	33.37	325.00	16.70	33.35	N57°19'05"E
C2	10.99	200.00	5.50	10.99	N01°49'03"W
C3	4.38	100.00	2.19	4.38	N88°30'10"E
C4	141.32	300.00	71.89	140.01	N73°45'15"E
C5	21.03	25.00	11.18	20.41	N23°51'06"E
C6	47.87	50.00	25.95	46.07	S20°30'59"W
C7	42.10	50.00	22.39	40.87	S31°02'09"E
C8	67.20	50.00	39.78	62.28	N86°20'21"E
C9	5.47	50.00	2.74	5.47	N44°42'08"E
C10	21.03	25.00	11.18	20.41	S65°39'43"W
C11	21.03	25.00	11.18	20.41	N24°35'19"W
C12	1.81	50.00	0.90	1.81	S47°38'48"E
C13	58.06	50.00	32.80	54.88	S13°20'33"E
C14	38.10	50.00	20.61	38.12	S42°19'50"W
C15	42.52	50.00	22.84	41.25	S89°05'53"W
C16	39.82	50.00	21.03	38.77	N43°43'32"W
C17	59.87	50.00	34.11	56.39	N13°23'31"E
C18	21.03	25.00	11.18	20.41	S23°39'03"W
C19	21.03	25.00	11.18	20.41	N24°35'19"W
C20	59.87	50.00	34.11	56.39	S14°22'47"E
C21	39.82	50.00	21.03	38.77	S42°44'14"W
C22	41.89	50.00	22.26	40.88	S89°33'11"W
C23	39.78	50.00	21.01	38.74	N43°39'10"W
C24	59.83	50.00	34.08	56.32	N13°25'01"E
C25	21.03	25.00	11.18	20.41	S23°36'03"W

Line Table		
Line #	Length	Direction
L1	35.38	S45°14'36"E
L2	35.28	N44°37'53"E
L3	35.43	S45°22'07"E
L4	35.28	N44°37'53"E
L5	35.42	S45°22'07"E



- DENOTES FND. #3 BAR w/CAP STAMPED "J&A 1484" UNLESS OTHERWISE NOTED
- DENOTES SET #3 BAR w/CAP STAMPED "J&A 1484" UNLESS OTHERWISE NOTED
- △ DENOTES SET CST NAIL IN "1484"

#### LEGEND:

P.O.C. = POINT OF COMMENCEMENT  
P.O.B. = POINT OF BEGINNING  
NR = NOT RADIAL  
B/L = BUILDING LIMIT LINE  
D & U/E = DRAINAGE & UTILITY EASEMENT

FINAL PLAT  
of  
ROCKPORT